

AlphaACCEL

(Slipstream Web Accelerator)
Installation & User Guide

Browse the internet up to 6X faster!

740.788.9000 (Newark)
740.454.4444 (Zanesville)
888.455.3450 (Toll Free)

March 2005

AlphaAccel (Slipstream) *Installation & User Guide*

AlphaLink offers the “Slipstream Web Accelerator” as an optional service to our dial-up clients.

Marketed as “AlphaAccel”, the Slipstream is the latest technology in dial-up compression and acceleration (also known as Hi-speed dialup or broadband dialup). Slipstream Accelerator is a client / server compression technology that works with your existing AlphaLink connection, allowing you to dramatically increase your web surfing and email speed by 3 to 5X or more. Pages that previously took 30 seconds to load, can now be viewed in less than 7 seconds with an average dial-up modem connection.

Slipstream Accelerator is the next best thing to DSL or cable, at a fraction of the price. Unlike costly and limited-availability broadband solutions, Slipstream Accelerator is:

- Available anywhere there is a normal telephone line
- Requires NO new hardware (works with your existing modem)
- Easy to use - install a small software client on your PC
- Great low cost alternative to DSL or Cable
- An easy upgrade to your existing AlphaLink account

How does it work?

Slipstream Accelerator is designed to provide maximum acceleration for the Web sites you visit regularly. So, the more you surf, the faster your favorite pages will load.

Slipstream Accelerator speeds up the delivery of Web pages three ways:

Compression. Slipstream Accelerator delivers text and graphics more efficiently, using a proprietary compression technology that significantly reduces the size of Web pages and page elements sent to your browser.

Caching. Slipstream Accelerator improves upon your browser's caching ability. Slipstream intelligently retains and reuses Web pages and page elements that have previously been sent to your PC. That's why the longer Slipstream Accelerator is in use on your PC, the faster your Web pages will load.

Persistent Connections. Slipstream Accelerator uses proprietary techniques to carefully manage and optimize the communication between your modem and our network of servers through a persistent connection. This eliminates the time wasted re-establishing and closing TCP/IP connections.

Minimum System Requirements

Requires Windows 98 / ME / XP / 2000*
Pentium 200MHz with 64MB RAM (128MB is recommended)
At least 5MB of hard-drive space
It works with Internet Explorer 4.0 as well as Netscape Communicator 4.0 or any later releases of both browsers
**A Macintosh Client is Available; Requires OS10.x*



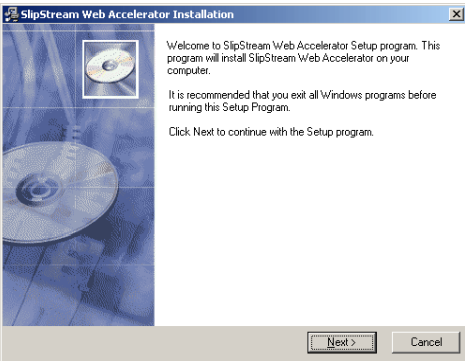
Activating AlphaAccel

Contact AlphaLink to activate user account. You can use AlphaAccel FREE for 30 days after activation. A charge of \$4.00 per month will be added to your account automatically after the 30-day trial.

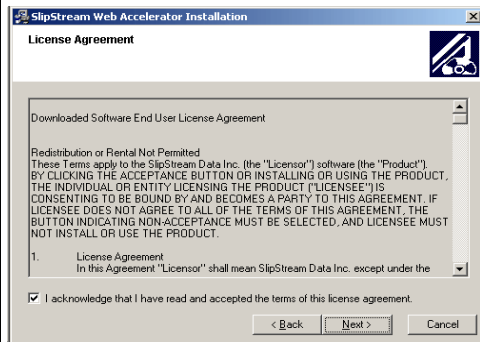
Cancelling AlphaAccel

To cancel, contact AlphaLink at to disable and remove charges immediately upon receipt of your bill. You will be responsible for any charges incurred if you do not contact AlphaLink to disable AlphaAccel.

Contact: email: billing@alink.com
Phone: 740.788.9000 (Newark)
740.454.4444 (Zanesville)
888.455.3450 (Toll Free)

Installing AlphaAccel / Slipstream Accelerator	
<p>Download AlphaAccel Installer from</p> <p>for windows</p> <p>http://alphaslip.alink.com/update/windows</p> <p>for macintosh:</p> <p>http://alphaslip.alink.com/update/mac</p> <p>Click on setup.exe Link</p> <p>Save to Desktop</p> <p>Double-click on </p>	<p>Place floppy disk provided by AlphaLink in Disk Drive (A:)</p> <p>Double-click on My Computer</p> <p>Double-click on Floppy Disk</p> <p>Double-click on setup.exe</p> 
	<p>Welcome Screen</p> <p>Select Next</p>

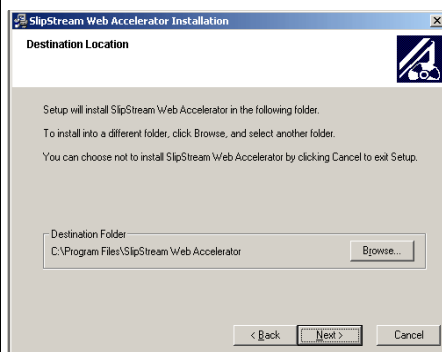
Installing AlphaAccel / Slipstream Accelerator



Accept License Agreement

Check (T) box *"I acknowledge that I have read and accepted the terms of this license agreement"*

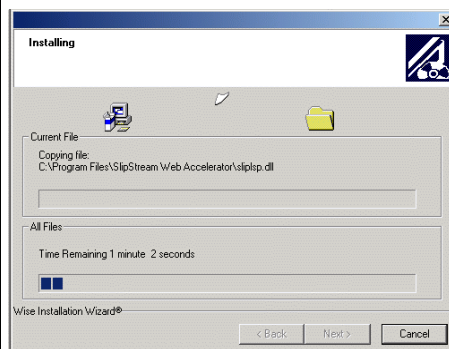
Select Next



Destination Location:

Recommended to accept the default location.

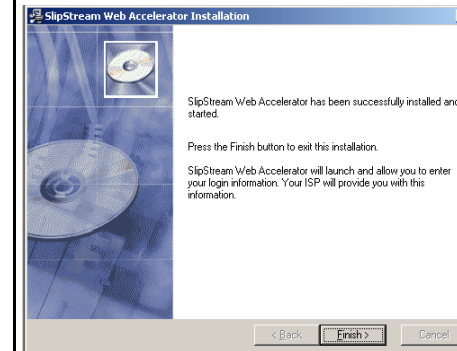
Click Next



Program Will Install

Please Wait

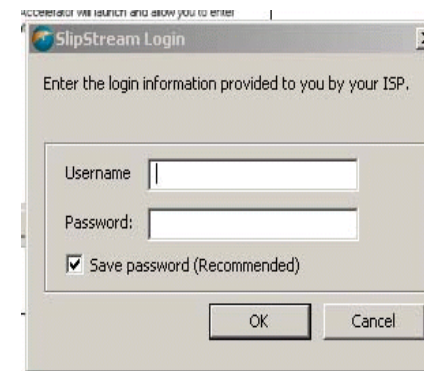
Installing AlphaAccel / Slipstream Accelerator



Installation Complete

Select Finish

(You may be asked to restart your computer).



Enter Login Information

Enter the same username and password that connects you to AlphaLink.

Select OK

A blue-green Globe will appear on your task bar (lower right of your screen next to time).

This icon shows that the accelerator (SlipStream) is running.



Starting and Stopping

When AlphaAccel / SlipStream Web Accelerator is launched it automatically connects.

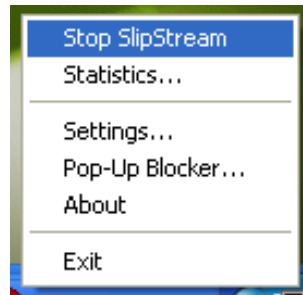
Occasionally, you may need to stop or start manually.

To Stop:

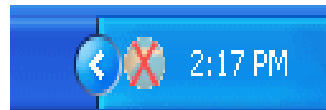
If you are connected and you want to manually disconnect. . .

Right-click on the SlipStream Web Accelerator system tray icon to access the pop-up menu.

Select the menu item "Stop SlipStream"



A Red "X" will appear over the icon in the System Tray

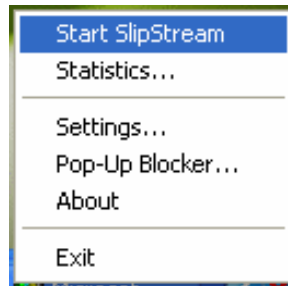


To Start:

If SlipStream is stopped and you want to manually start,

Right-click on the SlipStream Web Accelerator system tray icon to access the pop-up menu.

Select the menu item "Start SlipStream".



The Red "X" will disappear



Changing Settings & Features

Right-click or Left-click on the Globe to access the "User Interface".

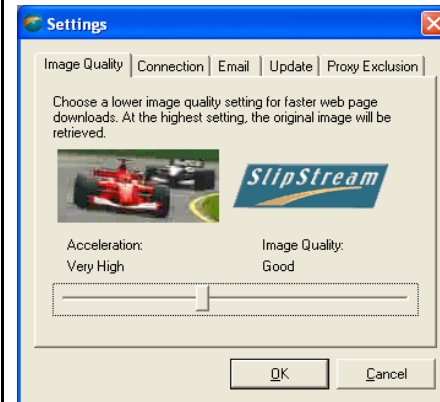
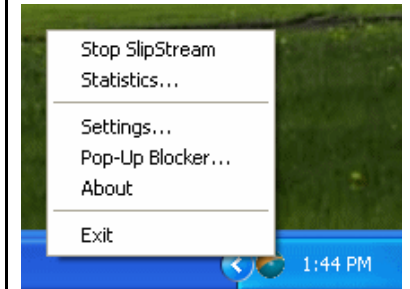


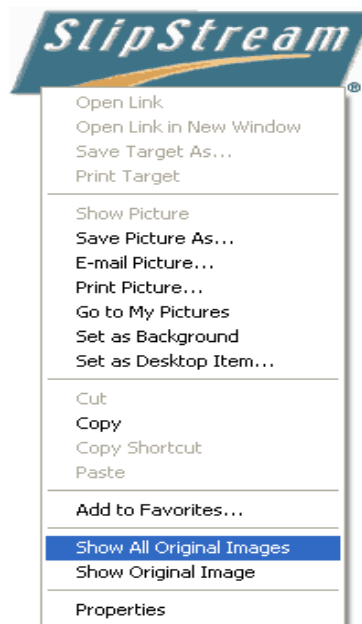
Image Quality

The accelerator works best if image quality is slightly reduced. You can improve the overall image quality; however the better the image display—the less benefit will be achieved by the accelerator).

Changing Settings & Features

While browsing, if you would like to request the full quality image, simply right-click on the desired image from within Internet Explorer and select "Show Original Image" from the menu.

If you want to see the full quality version of all images on the current page, simply right-click on any image from within Internet Explorer and select "Show All Original Images" from the menu.



Setting Username and Password Information

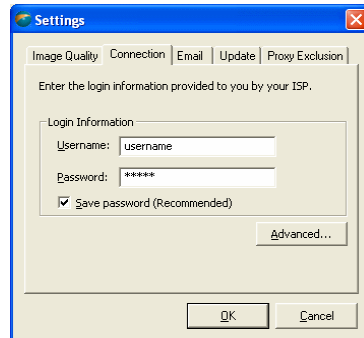
Your username and password information is located in the Connection Status dialog.

To set or change your username and password:

Right-click on the SlipStream Web Accelerator taskbar icon.

Select "Settings..." from the menu.

Click on the "Connection" tab.



Your username and password is the same one you use to connect to AlphaLink.

Changing Settings & Features

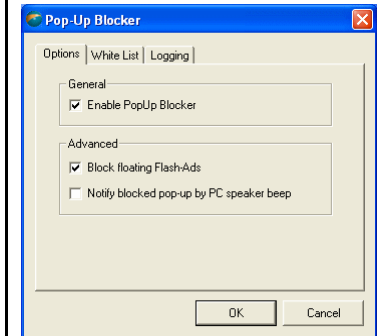
Enabling and Disabling the Pop-Up Blocker

AlphaAccel /SlipStream Web Accelerator can prevent pop-up windows and floating flash advertisements from appearing while you browse the Internet. This behavior is enabled by default, and no user-intervention is required. However, you can disable these features at any time.

Right-click on the SlipStream Web Accelerator system tray icon.

Select "PopUp Blocker..."

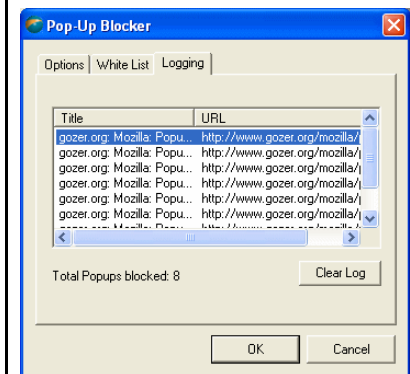
Select the "Options" tab



Remove the CheckMark from "Enable PopUp Blocker" to disable this feature.

Pop Up Blocker Logging

You can also see a list of all pop-ups that were blocked. This information is useful if you suspect a web site is not functioning properly because pop-ups are being blocked.



Changing Settings & Features

Disabling the Pop-Up Blocker for Specific Sites

A limited number of web sites require pop-ups to function correctly. For example: AlphaLink's webmail site requires multiple screens to open.

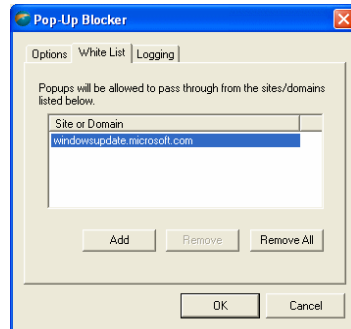
AlphaAccel/Slipstream allows you to specify a "White List" of sites where pop-ups will not be blocked.

Right-click on the Slipstream system tray icon.

Select "Pop-Up Blocker..."

Select the "White List" tab

Select Add. Enter the web site or domain you wish to exclude from the pop-up blocker.



Whitelist AlphaLink's webmail site:

webmail.alink.com

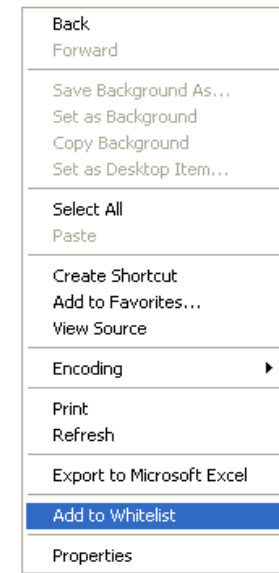
Changing Settings & Features

Adding Sites to the White List

You can add sites to the White List within the Pop-Up Blocker dialogs, shown above, or from within Internet Explorer.

Right-click on any text while browsing within Internet Explorer.

Select "Add to Whitelist" from the menu to add the current site to the White List.



Changing Settings & Features

Accelerating Email

AlphaAccel /SlipStream can reduce the amount of time it takes to send and receive email. AlphaAccel /SlipStream accelerates email transparently without any user intervention, so you can use your mail program exactly as you normally would.

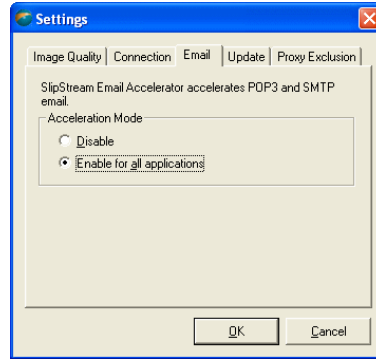
It is compatible with any POP3/SMTP client, including Outlook Express, Eudora and Netscape Mail. Email acceleration is disabled by default.

To enable email acceleration:

Right-click on the SlipStream Accelerator system tray icon.

Select "Settings...".

Select the "Email" tab



Select "Enable for all applications".

Press OK to save the settings. The changes will take effect the next time SlipStream Web Accelerator and your mail client are restarted.

Changing Settings & Features

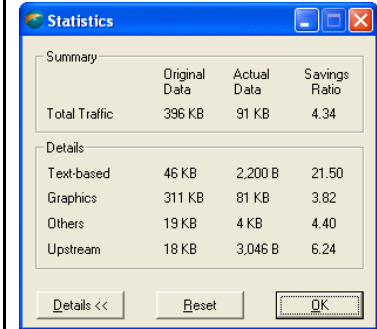
Viewing Your Acceleration Statistics

You can view the acceleration statistics and how they change dynamically using the Statistics dialog.

Click on the SlipStream Web Accelerator taskbar icon to access the pop-up menu

Select "Statistics...", to display the Statistics summary dialog

Click "Reset" to reset the statistics. You may do so at anytime while browsing without affecting SlipStream Web Accelerator's performance or operation.



Select Details to view more information.

Changing Settings & Features

Statistics Details:

Original Data	Size of the original (uncompressed) data.
Actual Data	Amount of data sent by SlipStream Web Accelerator.
Savings Ratio	Factor of reduction in data. E.g. A savings ratio of 4.00 means your connection is 4 times faster than a normal connection on average.
Text-based	This row contains compression information regarding text-based content.
Graphics	Contains compression information regarding graphical content.
Others	Contains information regarding content that is neither text nor graphical.
Upstream	Lists the total original and compressed amounts of data uploaded.

www.alink.com

Uninstalling SlipStream Web Accelerator

Under the Windows Control Panel, select "Add or Remove Programs"

Select SlipStream Web Accelerator and click Remove

The uninstaller will launch and guide you through the uninstallation procedure.