

# **AlphaAccel Installation Instructions**

**Updated May 15, 2006**

## **Detailed Installation Instructions**

The minimum system requirements are a Pentium 200MHz with 64MB RAM, and at least 5MB of hard-drive space. SlipStream Accelerator is supported on the following Windows Operating Systems: Windows 95b with Winsock 2, Windows 98, Windows 98SE, Windows Millennium Edition (Windows ME), Windows NT 4.0 Service Pack 6, Windows 2000 and Windows XP. It works with Internet Explorer 5.0 as well as Netscape 6.0 or any later releases of both browsers.

### **1. Download.**

The link to download the Client for AlphaACCEL (SlipStream) is:

<http://slipstreamclient.1dial.com/setup.exe>

Download the installer to your desktop.

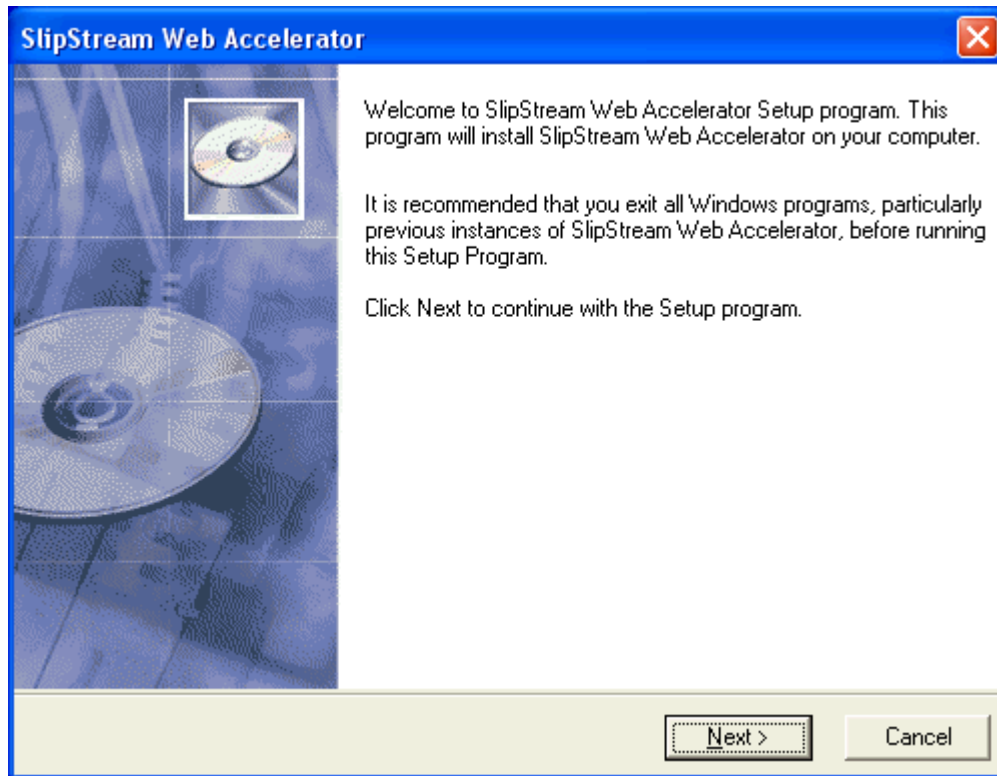
Once the download has completed, proceed to Step 2.

### **2. Install.**

After downloading the SlipStream Web Accelerator installer onto your Desktop, an icon as shown below will be on your Desktop. Double-clicking on the icon will launch the installer.



The installer will guide you through the complete setup process.



### 3. Connect.

As this is your first time launching the product, you will be prompted for a username and password. Enter your username with @alink.com (e.g., [myname@alink.com](#)). Use the same password you use to connect to AlphaLink.



Enter the username and password in the appropriate fields. Be sure to include "@alink.com" after the username. Also be sure to check save password.

Click OK. SlipStream Web Accelerator will connect to your ISP.

After installing SlipStream Web Accelerator, an icon as shown below is placed in your system tray. Acceleration will take place immediately after any web browser launches.



#### 4. Browse the Web.

Browse the web as you normally would.

When finished, simply close your web browser, as you normally would, and SlipStream Web Accelerator will remain idle in your system tray.

If you want to stop the application after browsing, select *Stop SlipStream* from the pop-up menu. If you desire to exit the application completely, click *Exit* from the pop-up menu. The pop-up menu can be accessed by clicking on the icon located in the system tray.

#### 5. Further Assistance visit at <http://slipstreamclient.1dial.com>

To get the most out of your new software, please visit the "[Using SlipStream Web Accelerator](#)" section

If you experience technical problems downloading, installing or running SlipStream Web Accelerator, consult the [Troubleshooting](#) section for further assistance.

Still having trouble? Feel free to [contact](#) us for product setup or feedback.

**Billing Cycle for this Item will begin in 30 days after this E-Mail is sent at an additional rate of \$2.00 per month! Please call us to unsubscribe if you are unsatisfied!**